



Original Patterns for 36" My Size Barbie®



All of our patterns are our own original creations. We are not affiliated with any doll manufacturers in any way and are not trying to represent ourselves as being so. We simply make patterns for popular dolls. All of our patterns & photos are copyrighted and cannot be copied and/or resold in any manner. You are however, free to make clothing using our patterns and sell the clothing as you like.

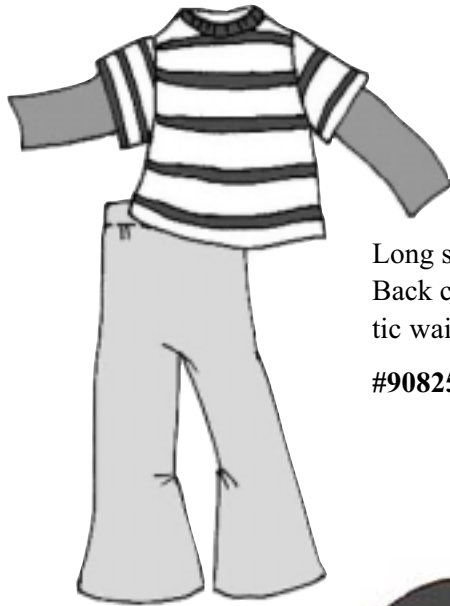
MY SIZE BARBIE PATTERNS



Market Day Complete Outfit

Each Premier Complete Pattern includes the patterns to make an entire outfit - from head to toe. You'll love creating these adorable outfits for your favorite dolls, just like the outfits that sell for up to \$100 or more! Market Day includes a full skirted, short sleeve dress, an A-line style jumper with back ties and a trimmed pocket, jersey socks and lace trimmed bloomers. Pattern also includes a felt jacket with buttonhole trimmed edges and matching clogs, plus the crocheted accessories - rolled rim cap and granny square shoulder bag. Kind of like getting three different patterns all in one.

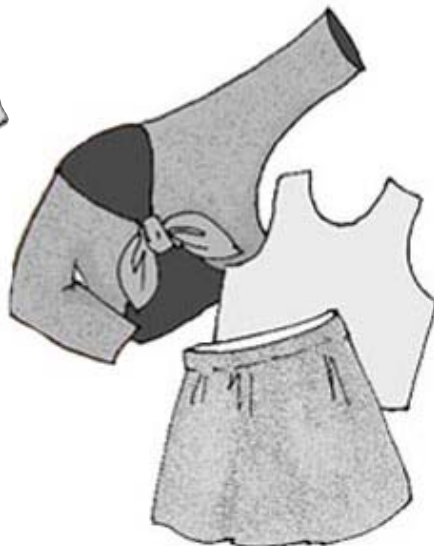
#20125 market day Premier Complete.....\$9.95



Layered Look Outfit

Long sleeve t-shirt is made to look like two layered tees, but it's a one-piece top! Back closing jersey knit top has self fabric collar. Pull on jersey pants have elastic waist and are slightly flared. A very popular look with the young ladies.

#90825 layered look outfit.....\$4.25



Front Tie Trio

Pull on skirt is slightly A-line, a perfect style for novelty knits. Top it off with a knit tank top covered with this adorable knit shrug with long sleeves and front tie.

#91225 front tie trio.....\$4.25

MY SIZE BARBIE PATTERNS



Three Tier Dress

Every doll will want this dress added to her wardrobe: Pretty ankle length dress has a delicate ruffled neckline, full, cuffed sleeves and a full, three tiered skirt. A great pattern to be creative with.

#90725 three tier dress.....\$4.25

Princess Dress

Doesn't everyone want at least one princess dress for their favorite doll? This pretty dress is fun to make and loads of fun to embellish. Features floor length full skirt, full 3/4 length sleeves, shaped neckline and wide trim belt. Back closing. Pointy princess hat is included.

#73225 princess dress.....\$4.25



Cardigan & Dress Set

Straight little dress is just below knee length, with fabric ruffle trim at the hem, and a Peter Pan collar. Felt or fleece cardigan ties in front. Matching beret has purchased trim. One of our most popular outfits.

#85125 cardigan & dress set.....\$4.25

Confirmation Dress

Make this dress for a favorite doll and give to a young lady on this very special day of her life. Pretty dress has a full tea length skirt with netted petticoat to keep it puffed out. Lace and ribbon trim at waist matches trim on headpiece. Dress closes in back.

#70325 confirmation dress.....\$4.25



MY SIZE BARBIE PATTERNS



Retro Poodle Skirt Set

Pattern includes a full felt skirt with felt poodle trim, back closing 3/4 sleeve t-shirt, front closing vinyl belt and neck scarf. Fun to make!

#70525 retro poodle skirt set.....\$4.25



Split Sleeve Dress

A nice all occasion dress. Fitted bodice attaches to a full skirt that is just below knee length. Split sleeves are easy to do, and fun for creative sewing. Dress opens in front with tiny little buttons running all the way to the hem (or you could add the buttons as decorations and using snaps for the actual closures). Matching hat included.

#79925 split sleeve dress.....\$4.25

Two Sleeveless Dresses

Delicate, summery garden dresses in two styles are easy to make. Both collarless dresses have a slightly flared skirt that is calf length. One has butterfly trim at shoulder and waist with a matching headband. The other has floral/ribbon trim at the waist with a coordinating trimmed hat. Both dresses snap in back

#70825 two sleeveless dresses.....\$4.25



Long Party Dress

For those very special occasions when a floor length gown is needed, this lovely dress with a three tiered skirt would be perfect. Back snapping dress has delicate lace trim at the neckline, and short capped sleeves. Matching headband has a fabric rose that is quite easy to make, and so pretty. Add another to the bodice front, or a fancy button as a brooch.

#79125 long party dress.....\$4.25

MY SIZE BARBIE PATTERNS

5 pc Jumper Set

5 pc set includes a front buttoning A-line jumper, long sleeve turtleneck, leggings, bucket style hat and shoulder bag. Use your old jeans to make this outfit - it looks great!

#83125 5 pc jumper set.....\$4.25



Angel Top & Slacks

This is one of those outfits that girls really seem to like. Full skirted blouse has long or short sleeves with elastic at the cuffs and lace trim at the neck. Snaps in back. Slacks are elastic waist, to be made as ankle length, pedal pushers or shorts. Headband is elasticized too.

#79425 angel top & slacks.....\$4.25



Ruffle Skirt Set

Straight, knee length skirt has ruffle trim at hem, elastic at the waist. T-shirt has accent stripe to match skirt, 3/4 length sleeves. Back closing

#82925 ruffle skirt set.....\$4.25



Off Shoulder & Gown

You'll be able to get really creative with this gown. It has a fitted bodice, either strapless or with spaghetti straps, and a full, gathered skirt. Drop shoulder accent is a pretty touch. Make it short or long, full or not so full. Petticoat included.

#69325 off shoulder gown\$4.25

MY SIZE BARBIE PATTERNS



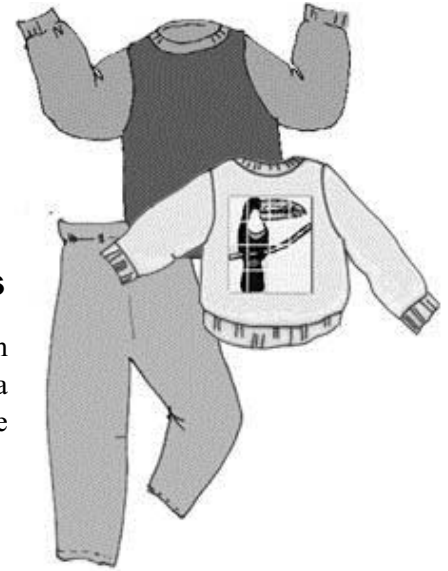
Skirts, Slacks & Capris

Here are a few wardrobe basics any doll would appreciate. Easy to make items include an elastic waist knee length skirt, a wrap skirt, elastic waist slacks and capri pants with short side slits.

#72125 skirts, slacks, & capris.....\$4.25

Sweatshirt is simple pullover style, with ribbed or self fabric collar, cuffs and bottom band. Leggings have elastic waist. Matching headband is elasticized in back, with a fabric flower trim in front. Pattern includes suggestions and instructions for simple applique and fabric paint embellishments.

#76225 sweats.....\$4.25

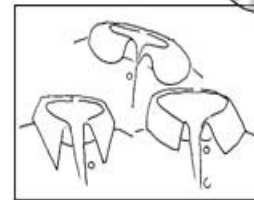
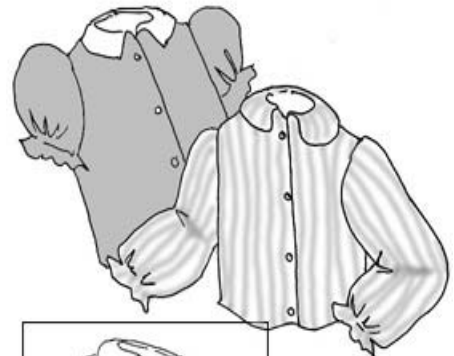


Sweats

Front Button Blouses

Versatile blouses to be paired with a skirt, slacks, jeans or a jumper. Short or long sleeved with elastic at the wrists. Full sleeves. Choice of three collar styles.

#79225 front button blouses.....\$4.25



Back Button Blouses

Make these pretty blouses in several colors - solids, stripes or prints. They look great with skirts, jumpers, overalls or jeans. Blouses have short, full sleeves, with attached cuffs or elasticized, gathered cuff. Rounded collar, with or without lace trim. Both blouses button in back.

#75525 back button blouses.....\$4.25

MY SIZE BARBIE PATTERNS



Turtlenecks & Tees

Back closing shirts are easy to make so you can whip up a whole assortment to fill Barbie's closet. They go great with her jeans, and are a good size to decorate.

#75825 turtlenecks & tees.....\$4.25

4 Pocket Jeans

Front closing jeans with hook and loop fly, four pockets and real belt loops. Nicely proportioned to fit Barbie just right.

#75725 4 pocket jeans.....\$4.25

Hip Hugger Flares & Tees

Flares are easy to make and fun to decorate! Waistband is lined for an uncluttered look. Flared legs are a perfect place for appliques, machine embroidery, lace or whatever! Three tees - one sleeveless, one cropped short sleeve, one regular. All close in back for a nice fit.

#69125 hip hugger flares & tees.....\$4.25



Jacket & Pillbox Hat

Hip length jacket has a single optional button at neckline. Designed to be made of fake fur or fleece. Easy to make and looks so cute, with or without a collar. Dress up the set with your fanciest buttons.

#82025 jacket & pillbox hat.....\$4.25

MY SIZE BARBIE PATTERNS



Felt Shoes

Now you can make adorable shoes to match every outfit you create! These shoes go together quickly, either by machine or handstitching. Uppers are made of interfaced felt, soles are fun foam. Pattern includes four styles of buckle shoes plus flats. Just a few simple pieces for each shoe. Shoes go on easily and are quite durable. Great fun to embellish too - add toe trims like bows, tiny flowers, ribbons or beads. Once you make your first pair, you'll be hooked!

#40825 felt shoes.....\$4.25



Summer/Winter Pajamas

Pattern includes cozy winter long nightgown with long sleeves and a full skirt, and angel top styled summer pjs with matching elastic waist bloomers.

#74525 summer/winter pajamas.....\$4.25